

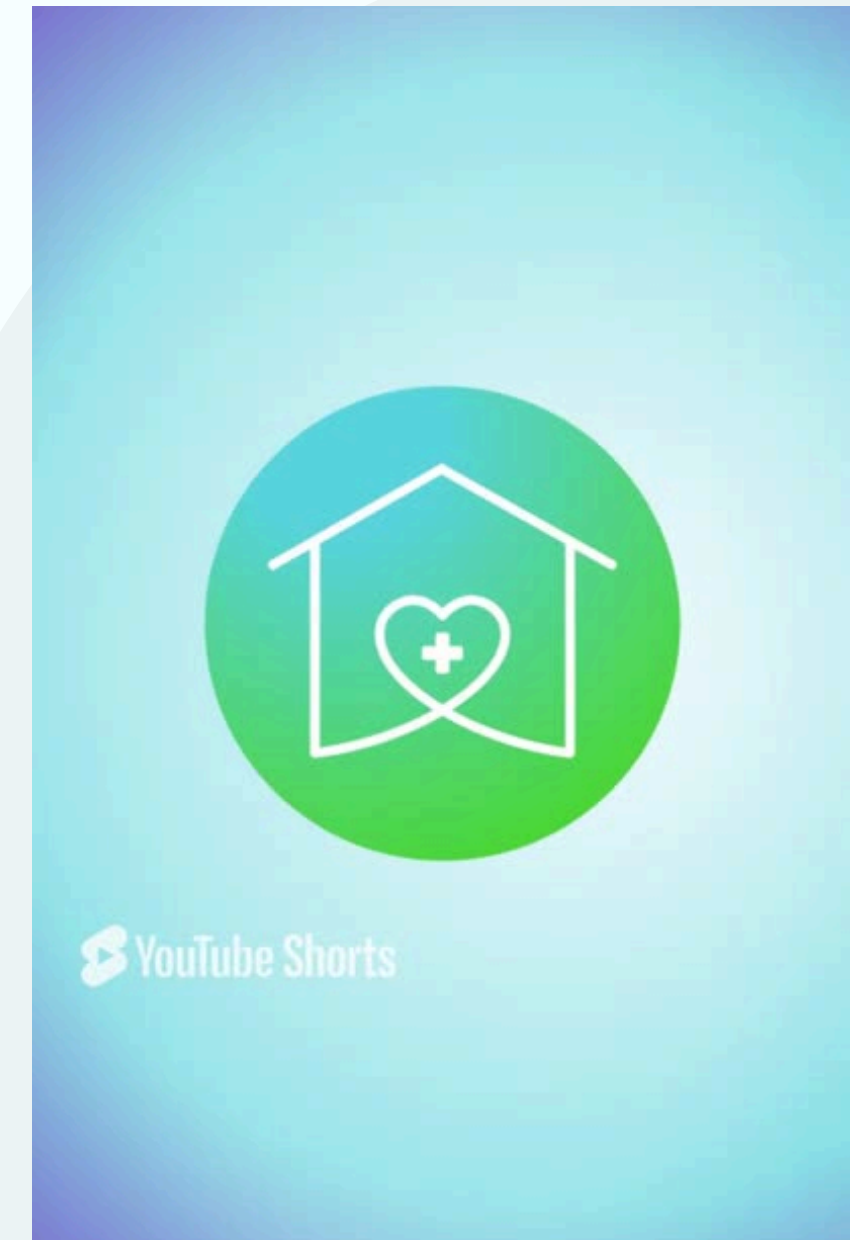


Missouri Home Visiting Referral System
CRIS LINK



MISSOURI HOME VISITING REFERRAL SYSTEM

The Missouri Home Visiting Referral System is a web-based platform that makes it easy to refer a family to home visiting services anywhere in the state through one of five Regional Coordinated Referral & Intake System (CRIS) networks. Each regional CRIS network is managed by a state-funded home visiting collective impact site and includes a variety of home visiting programs and models in its specific service area.

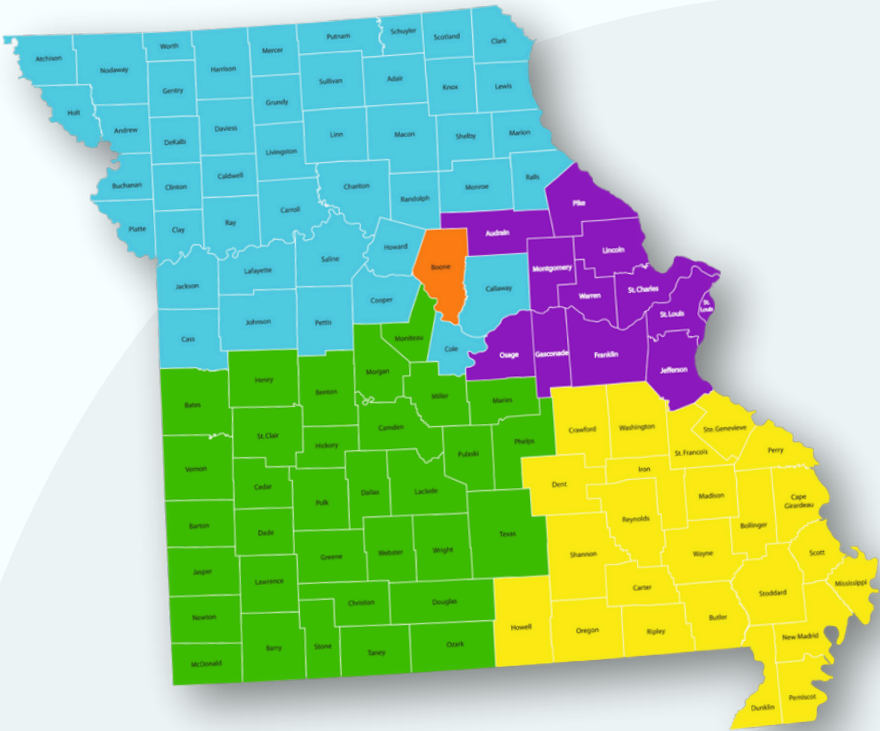


What is the CRIS LINK?

The CRIS Link is **FREE & EASY** for anyone to use.

The CRIS Link is the connector of the home visiting referral system. It is a one-stop shop for anyone in Missouri who wants to make a referral for home visiting services (prenatal to five). The CRIS Link connects users to one of five regional referral networks — called a Coordinated Referral & Intake System (CRIS) — to submit a referral based on their location.

Each CRIS network is led by a collective impact site that manages the collaborative efforts of participating home visiting programs and models within its region.



Region	CRIS Coordinator
1	Brighter Beginnings
2	Generate Health
3	Family Focused Network
4	Promise 1000
5	Whole Kids Outreach

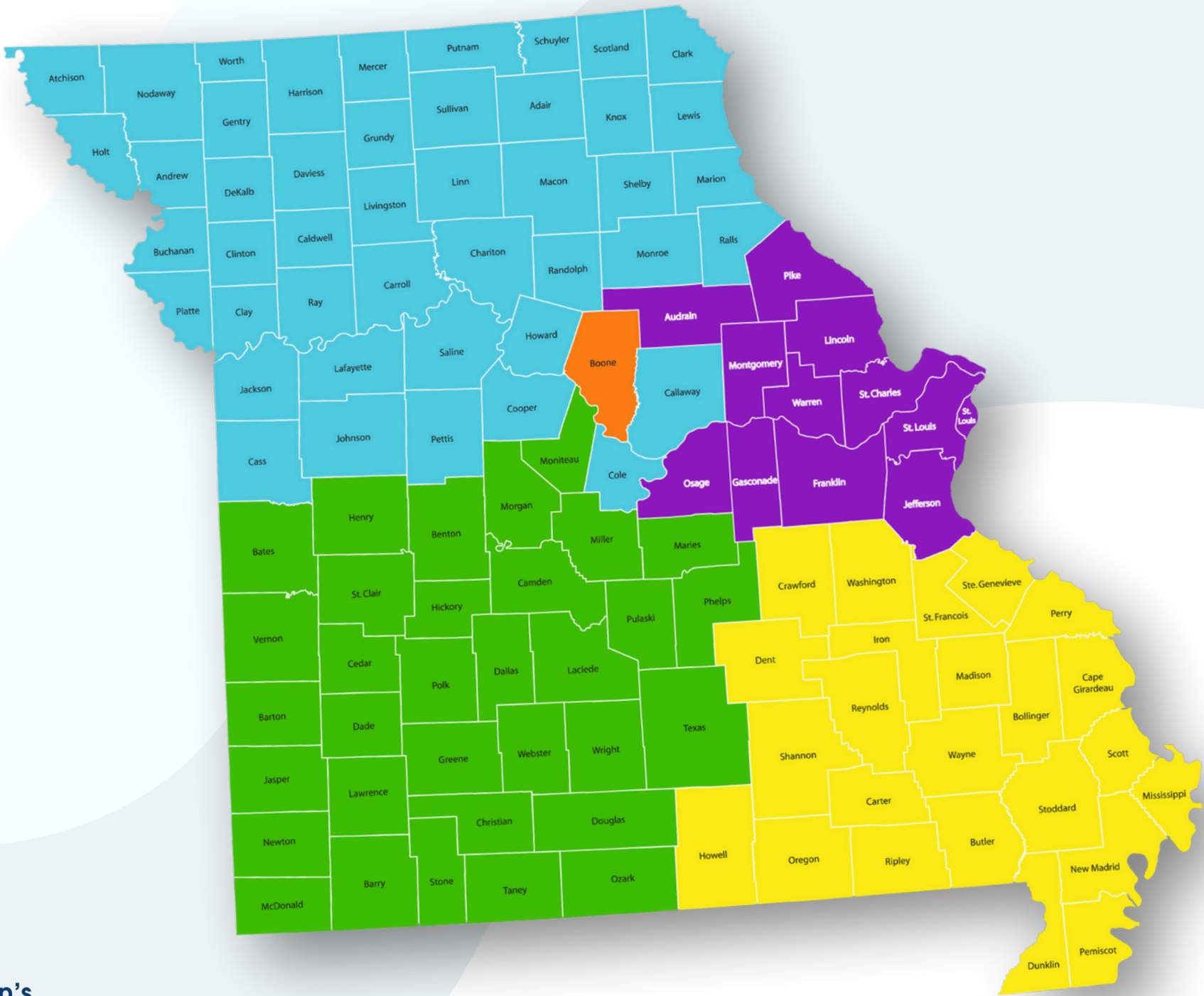


What is the
CRIS LINK?

Region/Coverage

Collective Impact Site

1	Brighter Beginnings
2	Generate Health
3	Family Focused Network
4	Promise 1000
5	Whole Kids Outreach



GenerateHealth™



PROMISE 1000
Home Visiting Collective



Whole Kids Outreach



Children's
Trust Fund

Missouri's Foundation For Child Abuse Prevention
Strong Families, Safe Kids

WHAT IS A REGIONAL CRIS?

Each CRIS network (or ‘Regional CRIS’) is led by a collective impact site that manages the collaborative efforts of participating home visiting programs and models within its region.

Each Regional CRIS consists of various home visiting programs and models within its network (including but not limited to Early Head Start, Healthy Families America, Nurse Family Partnership, Parents as Teachers, and more).

With a number of programs available within each CRIS, families can access services based on their needs, eligibility and location. Best of all — CRIS can determine the best placement so you don’t have to.



*Learn more or
start a referral*



WHY CRIS?

- ✓ It's FREE & EASY to use
- ✓ Easy to turn off referrals to manage capacity
- ✓ Matches families with programs that best meet their needs & location
- ✓ Can supplement other referral sources
- ✓ No need to remember:
 - Coverage areas
 - Eligibility criteria
 - Capacity to serve



*Learn more or
start a referral*



HOW DOES CRIS WORK?

Anyone can make a referral using the CRIS Link:

- ✓ Go to ctf4kids.org/crislink
- ✓ Select the family's county to find the CRIS Network in their region
- ✓ Click **"Begin Here"**
- ✓ Submit an online form through the Regional CRIS Network's referral page

Once the referral is submitted, the Regional CRIS assigns the family to a home visiting program based on the family's needs and eligibility, and the program's capacity.

The assigned home visiting agency then contacts the family to tell them more about their program and offer services.

*To learn more or start a referral, contact your **CRIS Coordinator***



Consider joining your

REGIONAL CRISIS NETWORK



GenerateHealth™



PROMISE 1000
Home Visiting Collective



Whole Kids Outreach



WHEN YOU JOIN YOUR REGIONAL CRIS...

You join a collaborative network of home visiting partners with a common goal of making home visiting accessible to anyone who needs it.

- ✔ Easily receive & manage referrals
- ✔ Free up time to focus on families
- ✔ Ensure families find a place to land



*Learn more or
start a referral*



WHAT ABOUT MY OTHER REFERRAL PARTNERS?

Joining and using the CRIS does not exclude you from working with other referral partners. If you have relationships and agreements with other referral networks, you can maintain these while also incorporating your CRIS Network as needed.



Learn more or start a referral



WHAT IF MY AGENCY REACHES CAPACITY?

The software that runs this adaptive referral system is smart and efficient. Participating home visiting providers are able to connect with their regional Collective Impact (CI) site when they are at capacity (or are unable to take referrals during a period of time).

The CI site monitors and maintains CRIS and can easily turn off referrals to manage capacity and turn them back on when you're ready.



*Learn more or
start a referral*



IS THERE ANY TRAINING INVOLVED?

If you or your team needs help learning how to navigate CRIS or wants to learn more about the other opportunities through the collective impact site in your region, your Regional Collective Impact Site Coordinator can help.

CRIS allows the CI site to track, organize and report out aggregate referral data and they can provide you with your own referral data that matters to you.



Learn more or start a referral



HOW DO I JOIN?

Join our growing network of home visiting providers across Missouri.

Visit ctf4kids.org/crislink to be linked to the Regional Collective Impact Coordinator in your area.

You can also scan the QR code to be taken directly to the CRIS Link.



Learn more or start a referral



Thank you!

QUESTIONS?

I'd love to hear from you!

email

Learn more or
start a referral

